

polyester crown forms

matrices for class II

cervical matrices

occlusal matrices

polycarbonate crowns

flexible scalers

matrix bands

interdental wedges

endopin

ENG



AnGer G&A



DENTAL RESTORATION PRODUCTS

CATALOGUE

Polyester Crown Forms	5
How To Read A Product Code	6
Sets	7
Lower Incisors	8
Incisors	10
Laterals	12
Canines	14
Premolars	16
Molars	18
Anteriors	20
Posteriors	21
Polycarbonate Crowns	22
Lower Incisors	24
Incisors	25
Laterals	26
Canines	27
Premolars	28
Molars	29
Anteriors&Posteriors	30
Flat Matrices	31
Self-Locking Matrices	32
Shaped Matrices	34
Cervical Matrices	36
Polyester Cones	37
Occlusal Matrices	38
Endopins	40
Polyester Flexible Scalars	42
Metal Flexible Scalars	43
Polyester Bands	44
Metal Matrix Bands	45
Light-Conductive Wedges	46
Soft Elastic Wedges	47
Endolucent	48
Instruments	49
Useful Dental Gadgets	50

You are holding in your hands a catalogue of Polish manufacturer that has been making high quality dental restoration products since 1991. For our products we set three main goals: they are supposed to help in achieving a final effect as close to natural as possible, significantly reduce time devoted to that, as well as provide a smooth filling surface which reduces the pace of tartar and plaque build-up.

Our hard work resulted in establishing a stable position in the market of dental restoration products and mutually beneficial business relations with our partners in over 50 countries all over the world.

As we invite you to purchase our products and to familiarize with their advantages, we listen carefully to your opinions and expectations. Conversations with you during dental fairs and conferences are our invaluable source of inspiration.

Our certificates:

1. **Certificates of Free Sale**
No. 118/12, 119/12, 120/12, 121/12
2. **FDA registration no. 3004951515**
3. All our products have the **CE marking**, according to the European Council Directive 93/42/EEC


 Urząd Rejestracji
 Produktów Leczniczych, Wyrobów Medycznych i Produktów Biobójczych
 al. Żołnierska 41, 01-734 Warszawa, tel. +48 22 492 11 00, fax +48 22 492 11 09
 NIP: 521 52 14 192 REGON: 015 24 96 01

Warsaw, 2012-04-04

CERTIFICATE OF FREE SALE No. 121/12

In reference to application for a free sale certificate made by the

Przedsiębiorstwo Produkcyjne AnGer G&A Gerard Wójcicki
(applicant for certificate of free sale)

it is concluded that the medical device listed below:

Name of the medical device	Type
Matrices for teeth reconstruction (crowns, forms, profiles)	Polyester crown forms shaped matrices self-locking matrices flat matrices cervical matrices polyester cones

manufactured by:

Przedsiębiorstwo Produkcyjne AnGer G&A Gerard Wójcicki
(identification of the manufacturer)
 Szczygłoc ul. Długa 64A, 32-083 Balice

on the basis of the statement of the manufacturer the aforementioned medical device is CE marked at the sole responsibility of the manufacturer. The medical device CE marked in conformity with the act of 20th May 2010 on medical devices (Official Journal of Laws, No. 107, item 679 as amended) which implements Directive 93/42/EEC can be placed on the market and put into service in the territory of Republic of Poland. Export of the above product is not prohibited.

President of the Office


Jacek Stawka

Certificate of Free Sale is issued pursuant to the provisions of the art. 87 of the Act on Medical Devices of 20th May 2010 (Official Journal of Laws, No. 107, item 679 as amended)

You can meet us at various dental fairs & exhibitions.
Please visit our website www.anger.com.pl to find out where our next exhibition takes place.

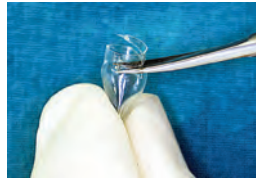
Absolutely necessary whenever aesthetics of restoration and patient's comfort are of high priority. Application of **AnGer** crowns guarantees perfectly smooth surface, and such surface lowers the risk of tartar and plaque occurrence.

1



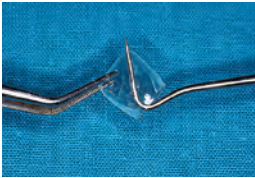
When tooth is prepared for restoration, carefully choose the crown size. Choosing the right size assures natural look of reconstructed tooth.

2



Adjust length of the crown by trimming the cervical end. It should overlap the tooth at least 2mm above the defect. This provides smooth joining of tooth and filling.

3



To eliminate formation of air bubbles in the filling, perforate the corners or cusps of the crown before putting the filling in.

4



Place filling in the crown, so that it gathers at the very spot of the largest defect.

5



Once the crown is put on the tooth, remove excess of the filling that came out of the crown through perforation. Secure the crown form with wedges and start polymerisation.

6



When polymerisation process is completed, cut the crown form delicately – just make a scratch on the crown surface. Now remove the crown form from reconstructed tooth.

AnGer crown forms are a perfect solution when applying the layer reconstruction method.

1



The labial surface of **AnGer** crown form can be easily cut out to enable material application layer by layer in various shades which gives perfectly natural look of reconstructed tooth.

2



With secured lingual surface and proximal surfaces and incisal ridge of a tooth, the filling material applied by layers does not "drip". Before applying the last, facing layer, remove the crown form to avoid the layering effect.

What makes **AnGer** crown forms so special? Flexibility, strength, and well-designed cervical part that in an unusual way make it possible to use the crown forms in the layer method.

HOW TO READ A CROWN FORM PRODUCT CODE?

The codes of **AnGer** transparent crown forms consist of 2 – 4 segments, e.g. 3-32, 3-10-80, 3-05-80-R etc.

The first segment is a digit that corresponds to a catalogue symbol of a **teeth group** or a set of groups:

- 1 - Set of ALL GROUPS of teeth
- 2 - Lower Incisors
- 3 - Incisors
- 4 - Laterals
- 5 - Canines
- 6 - Premolars
- 7 - Molars
- 8 - Set of ANTERIORS
- 9 - Set of POSTERIORS

The second segment is a digit that stands for the **number of pieces** in a box. **AnGer G&A** offers boxes that hold **5, 10, 32, 80, 108,** or **144** pieces of crown forms (e.g. 3-32 = set of 32 pcs of Incisors).

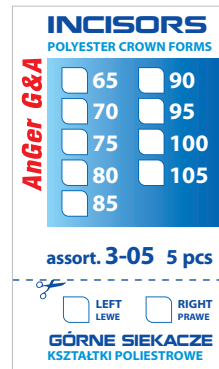
The third segment stands for the **width** of a crown form, expressed **in 1/10mm** for all the teeth groups (e.g. 80 means a 8.0 mm wide crown form) **except Lower Incisors** that have their **length** in this position.

Finally, the fourth segment are the letters **L** or **R** which stand for the **left** or **right side** of maxilla or mandible, respectively. The fourth segment refers to the **5-pcs** boxes only.

Example:

The code **3-05-80-R** means a box that includes 5 pcs of crown forms for Incisors with the width of 8.0 mm, designed for the right side.

The code **2-10-110** - means a box that includes 10 pcs of crown forms for Lower Incisors with the length of 11 mm (5 right and 5 left).



Sets

144 pcs ALL GROUPS
both sides, all sizes

Group	Size	LEFT	RIGHT
Incisors	all	20 pcs	20 pcs
Lower Incisors	all	8 pcs	8 pcs
Laterals	all	8 pcs	8 pcs
Canines	all	12 pcs	12 pcs
Premolars	all	10 pcs	10 pcs
Molars	all	14 pcs	14 pcs

Art. 1-144



80 pcs ALL GROUPS
both sides, assorted sizes

Group	Size	LEFT	RIGHT
Incisors	mix	16 pcs	16 pcs
Lower Incisors	all	4 pcs	4 pcs
Laterals	all	4 pcs	4 pcs
Canines	mix	8 pcs	8 pcs
Premolars	mix	4 pcs	4 pcs
Molars	mix	4 pcs	4 pcs

Art. 1-80



32 pcs ALL GROUPS
both sides, assorted sizes

Group	Size	LEFT	RIGHT
Incisors	mix	5 pcs	5 pcs
Lower Incisors	mix	2 pcs	2 pcs
Laterals	mix	2 pcs	2 pcs
Canines	mix	2 pcs	2 pcs
Premolars	mix	3 pcs	3 pcs
Molars	mix	2 pcs	2 pcs

Art. 1-32



Art. 1-STARTER includes 187 pieces of our products - it gives you the possibility to learn how useful **AnGer** products are. This special kit is a perfect set for beginning of our co-operation.

Polyester crown forms - 68 pcs. - 1 pc. of each size of the crown forms

Elastic interdental wedges - 40 pcs. - 10 pcs. of each size (L, M, S, XS)

Light-conductive interdental wedges - 40 pcs. - 10 pcs. of each size (L, M, S, XS)

Self-locking matrices - 16 pcs. - 2 pcs. of each size and foil thickness (A - 0.075 mm and B - 0.050 mm)

Shaped matrices - 8 pcs. - 1 pc. of each size and foil thickness (A - 0.075mm and B - 0.050mm)

Cervical matrices - 8 pcs. + holder with the diameter of 6 mm

Cones for root-core restorations - 6 pcs. - 1 pc. of each size



Lower Incisors

**5
pcs**

Lower Incisors - LEFT
one side, one size

Art. No.	Size	Length
2-05-100L	100	10 mm
2-05-110L	110	11 mm
2-05-120L	120	12 mm
2-05-130L	130	13 mm

**5
pcs**

Lower Incisors - RIGHT
one side, one size

Art. No.	Size	Length
2-05-100R	100	10 mm
2-05-110R	110	11 mm
2-05-120R	120	12 mm
2-05-130R	130	13 mm

**10
pcs**

Lower Incisors
both sides, one size

Art. No.	LEFT	RIGHT	Size	Length
2-10-100	5 pcs	5 pcs	100	10 mm
2-10-110	5 pcs	5 pcs	110	11 mm
2-10-120	5 pcs	5 pcs	120	12 mm
2-10-130	5 pcs	5 pcs	130	13 mm



Lower Incisors

32 pcs Lower Incisors
both sides, all sizes

Art. 2-32	LEFT	RIGHT	Size	Length
	4 pcs	4 pcs	100	10 mm
	4 pcs	4 pcs	110	11 mm
	4 pcs	4 pcs	120	12 mm
	4 pcs	4 pcs	130	13 mm



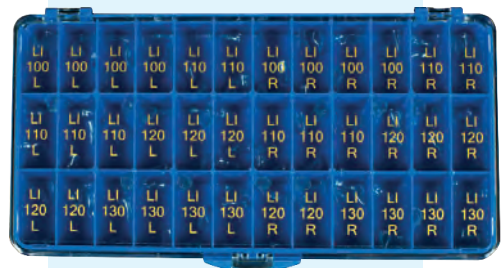
80 pcs Lower Incisors
both sides, all sizes

Art. 2-80	LEFT	RIGHT	Size	Length
	40 pcs	40 pcs	100	10 mm
			110	11 mm
			120	12 mm
			130	13 mm



108 pcs Lower Incisors
both sides, all sizes

Art. 2-108	LEFT	RIGHT	Size	Length
	12 pcs	12 pcs	100	10 mm
	15 pcs	15 pcs	110	11 mm
	15 pcs	15 pcs	120	12 mm
	12 pcs	12 pcs	130	13 mm



Incisors

5 pcs Incisors - **LEFT**
one side, one size

Art. No.	Size	Width
3-05-65L	65	6.5 mm
3-05-70L	70	7.0 mm
3-05-75L	75	7.5 mm
3-05-80L	80	8.0 mm
3-05-85L	85	8.5 mm
3-05-90L	90	9.0 mm
3-05-95L	95	9.5 mm
3-05-100L	100	10.0 mm
3-05-105L	105	10.5 mm

5 pcs Incisors - **RIGHT**
one side, one size

Art. No.	Size	Width
3-05-65R	65	6.5 mm
3-05-70R	70	7.0 mm
3-05-75R	75	7.5 mm
3-05-80R	80	8.0 mm
3-05-85R	85	8.5 mm
3-05-90R	90	9.0 mm
3-05-95R	95	9.5 mm
3-05-100R	100	10.0 mm
3-05-105R	105	10.5 mm



10 pcs Incisors
both sides, one size

Art. No.	LEFT	RIGHT	Size	Width
3-10-65	5 pcs	5 pcs	65	6.5 mm
3-10-70	5 pcs	5 pcs	70	7.0 mm
3-10-75	5 pcs	5 pcs	75	7.5 mm
3-10-80	5 pcs	5 pcs	80	8.0 mm
3-10-85	5 pcs	5 pcs	85	8.5 mm
3-10-90	5 pcs	5 pcs	90	9.0 mm
3-10-95	5 pcs	5 pcs	95	9.5 mm
3-10-100	5 pcs	5 pcs	100	10.0 mm
3-10-105	5 pcs	5 pcs	105	10.5 mm



Incisors

32 pcs Incisors both sides, all sizes

Art. 3-32	LEFT	RIGHT	Size	Width
	1 pc	1 pc	65	6.5 mm
	1 pc	1 pc	70	7.0 mm
	2 pcs	2 pcs	75	7.5 mm
	2 pcs	2 pcs	80	8.0 mm
	2 pcs	2 pcs	85	8.5 mm
	2 pcs	2 pcs	90	9.0 mm
	2 pcs	2 pcs	95	9.5 mm
	2 pcs	2 pcs	100	10.0 mm
	2 pcs	2 pcs	105	10.5 mm



80 pcs Incisors both sides, all sizes

Art. 3-80	LEFT	RIGHT	Size	Width
			65	6.5 mm
			70	7.0 mm
			75	7.5 mm
			80	8.0 mm
	40 pcs	40 pcs	85	8.5 mm
			90	9.0 mm
			95	9.5 mm
			100	10.0 mm
			105	10.5 mm



108 pcs Incisors both sides, all sizes

Art. 3-108	LEFT	RIGHT	Size	Width
	6 pcs	6 pcs	65	6.5 mm
	6 pcs	6 pcs	70	7.0 mm
	6 pcs	6 pcs	75	7.5 mm
	6 pcs	6 pcs	80	8.0 mm
	6 pcs	6 pcs	85	8.5 mm
	6 pcs	6 pcs	90	9.0 mm
	6 pcs	6 pcs	95	9.5 mm
	6 pcs	6 pcs	100	10.0 mm
	6 pcs	6 pcs	105	10.5 mm



Laterals

**5
pcs**

Laterals - LEFT
one side, one size

Art. No.	Size	Width
4-05-50L	50	5.0 mm
4-05-55L	55	5.5 mm
4-05-60L	60	6.0 mm
4-05-65L	65	6.5 mm

**5
pcs**

Laterals - RIGHT
one side, one size

Art. No.	Size	Width
4-05-50R	50	5.0 mm
4-05-55R	55	5.5 mm
4-05-60R	60	6.0 mm
4-05-65R	65	6.5 mm

**10
pcs**

Laterals
both sides, one size

Art. No.	LEFT	RIGHT	Size	Width
4-10-50	5 pcs	5 pcs	50	5.0 mm
4-10-55	5 pcs	5 pcs	55	5.5 mm
4-10-60	5 pcs	5 pcs	60	6.0 mm
4-10-65	5 pcs	5 pcs	65	6.5 mm



Laterals

**32
pcs**

**Laterals
both sides, all sizes**

Art. 4-32

LEFT	RIGHT	Size	Width
4 pcs	4 pcs	50	5.0 mm
4 pcs	4 pcs	55	5.5 mm
4 pcs	4 pcs	60	6.0 mm
4 pcs	4 pcs	65	6.5 mm



**80
pcs**

**Laterals
both sides, all sizes**

Art. 4-80

LEFT	RIGHT	Size	Width
		50	5.0 mm
40 pcs	40 pcs	55	5.5 mm
		60	6.0 mm
		65	6.5 mm



**108
pcs**

**Laterals
both sides, all sizes**

Art. 4-108

LEFT	RIGHT	Size	Width
12 pcs	12 pcs	50	5.0 mm
15 pcs	15 pcs	55	5.5 mm
15 pcs	15 pcs	60	6.0 mm
12 pcs	12 pcs	65	6.5 mm



Canines

**5
pcs**

Canines - LEFT
one side, one size

Art. No.	Size	Width
5-05-65L	65	6.5 mm
5-05-75L	75	7.5 mm
5-05-85L	85	8.5 mm
5-05-95L	95	9.5 mm
5-05-105L	105	10.5 mm

**5
pcs**

Canines - RIGHT
one side, one size

Art. No.	Size	Width
5-05-65R	65	6.5 mm
5-05-75R	75	7.5 mm
5-05-85R	85	8.5 mm
5-05-95R	95	9.5 mm
5-05-105R	105	10.5 mm

**10
pcs**

Canines
both sides, one size

Art. No.	LEFT	RIGHT	Size	Width
5-10-65	5 pcs	5 pcs	65	6.5 mm
5-10-75	5 pcs	5 pcs	75	7.5 mm
5-10-85	5 pcs	5 pcs	85	8.5 mm
5-10-95	5 pcs	5 pcs	95	9.5 mm
5-10-105	5 pcs	5 pcs	105	10.5 mm



Canines

32 pcs Canines both sides, all sizes

Art. 5-32	LEFT	RIGHT	Size	Width
	2 pcs	2 pcs	65	6.5 mm
	4 pcs	4 pcs	75	7.5 mm
	4 pcs	4 pcs	85	8.5 mm
	4 pcs	4 pcs	95	9.5 mm
	2 pcs	2 pcs	105	10.5 mm



80 pcs Canines both sides, all sizes

Art. 5-80	LEFT	RIGHT	Size	Width
			65	6.5 mm
			75	7.5 mm
	40 pcs	40 pcs	85	8.5 mm
			95	9.5 mm
			105	10.5 mm



108 pcs Canines both sides, all sizes

Art. 5-108	LEFT	RIGHT	Size	Width
	9 pcs	9 pcs	65	6.5 mm
	12 pcs	12 pcs	75	7.5 mm
	12 pcs	12 pcs	85	8.5 mm
	12 pcs	12 pcs	95	9.5 mm
	9 pcs	9 pcs	105	10.5 mm



Premolars

**5
pcs**

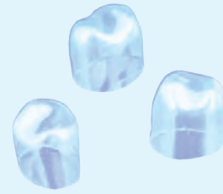
**Premolars - LEFT
one side, one size**

Art. No.	Size	Width
6-05-65L	65	6.5 mm
6-05-70L	70	7.0 mm
6-05-75L	75	7.5 mm
6-05-80L	80	8.0 mm
6-05-85L	85	8.5 mm

**5
pcs**

**Premolars - RIGHT
one side, one size**

Art. No.	Size	Width
6-05-65L	65	6.5 mm
6-05-70L	70	7.0 mm
6-05-75L	75	7.5 mm
6-05-80L	80	8.0 mm
6-05-85L	85	8.5 mm



**10
pcs**

**Premolars
both sides, one size**

Art. No.	LEFT	RIGHT	Size	Width
6-10-65	5pcs	5pcs	65	6.5 mm
6-10-70	5pcs	5pcs	70	7.0 mm
6-10-75	5pcs	5pcs	75	7.5 mm
6-10-80	5pcs	5pcs	80	8.0 mm
6-10-85	5pcs	5pcs	85	8.5 mm



Premolars

32 pcs Premolars
both sides, all sizes

	LEFT	RIGHT	Size	Width
Art. 6-32	2 pcs	2 pcs	65	6.5 mm
	4 pcs	4 pcs	70	7.0 mm
	4 pcs	4 pcs	75	7.5 mm
	4 pcs	4 pcs	80	8.0 mm
	2 pcs	2 pcs	85	8.5 mm



80 pcs Premolars
both sides, all sizes

	LEFT	RIGHT	Size	Width
Art. 6-80			65	6.5 mm
			70	7.0 mm
	40 pcs	40 pcs	75	7.5 mm
			80	8.0 mm
			85	8.5 mm



108 pcs Premolars
both sides, all sizes

	LEFT	RIGHT	Size	Width
Art. 6-108	9 pcs	9 pcs	65	6.5 mm
	12 pcs	12 pcs	70	7.0 mm
	12 pcs	12 pcs	75	7.5 mm
	12 pcs	12 pcs	80	8.0 mm
	9 pcs	9 pcs	85	8.5 mm



Molars

5 pcs Molars - **LEFT**
one side, one size

Art. No.	Size	Width
7-05-90L	90	9.0 mm
7-05-95L	95	9.5 mm
7-05-100L	100	10.0 mm
7-05-105L	105	10.5 mm
7-05-110L	110	11.0 mm
7-05-115L	115	11.5 mm
7-05-120L	120	12.0 mm

5 pcs Molars - **RIGHT**
one side, one size

Art. No.	Size	Width
7-05-90R	90	9.0 mm
7-05-95R	95	9.5 mm
7-05-100R	100	10.0 mm
7-05-105R	105	10.5 mm
7-05-110R	110	11.0 mm
7-05-115R	115	11.5 mm
7-05-120R	120	12.0 mm

10 pcs Molars
both sides, one size

Art. No.	LEFT	RIGHT	Size	Width
7-10-90	5 pcs	5 pcs	90	9.0 mm
7-10-95	5 pcs	5 pcs	95	9.5 mm
7-10-100	5 pcs	5 pcs	100	10.0 mm
7-10-105	5 pcs	5 pcs	105	10.5 mm
7-10-110	5 pcs	5 pcs	110	11.0 mm
7-10-115	5 pcs	5 pcs	115	11.5 mm
7-10-120	5 pcs	5 pcs	120	12.0 mm



Molars

32 pcs Molars both sides, all sizes

Art. 7-32

LEFT	RIGHT	Size	Width
2 pcs	2 pcs	90	9.0 mm
2 pcs	2 pcs	95	9.5 mm
2 pcs	2 pcs	100	10.0 mm
2 pcs	2 pcs	105	10.5 mm
4 pcs	4 pcs	110	11.0 mm
2 pcs	2 pcs	115	11.5 mm
2 pcs	2 pcs	120	12.0 mm



80 pcs Molars both sides, all sizes

Art. 7-80

LEFT	RIGHT	Size	Width
		90	9.0 mm
		95	9.5 mm
		100	10.0 mm
40 pcs	40 pcs	105	10.5 mm
		110	11.0 mm
		115	11.5 mm
		120	12.0 mm



108 pcs Molars both sides, all sizes

Art. 7-108

LEFT	RIGHT	Size	Width
6 pcs	6 pcs	90	9.0 mm
9 pcs	9 pcs	95	9.5 mm
9 pcs	9 pcs	100	10.0 mm
9 pcs	9 pcs	105	10.5 mm
9 pcs	9 pcs	110	11.0 mm
6 pcs	6 pcs	115	11.5 mm
6 pcs	6 pcs	120	12.0 mm



Anteriors

**32
pcs**

**Incisors, Lower Incisors,
Laterals
both sides, assorted sizes**

Art. 8-32

Group	Size	LEFT	RIGHT
Incisors	mix	8 pcs	8 pcs
Lower Incisors	all	4 pcs	4 pcs
Laterals	all	4 pcs	4 pcs



**80
pcs**

**Incisors, Lower Incisors,
Laterals, Canines
both sides, assorted sizes**

Art. 8-80

Group	Size	LEFT	RIGHT
Incisors	mix	24 pcs	24 pcs
Lower Incisors	all	4 pcs	4 pcs
Laterals	all	4 pcs	4 pcs
Canines	all	8 pcs	8 pcs



**108
pcs**

**Incisors, Lower Incisors,
Laterals
both sides, all sizes**

Art. 8-108

Group	Size	LEFT	RIGHT
Incisors	all	30 pcs	30 pcs
Lower Incisors	all	12 pcs	12 pcs
Laterals	all	12 pcs	12 pcs



Posteriors

32 pcs Canines, Premolars, Molars both sides, assorted sizes

Art. 9-32	Group	Size	LEFT	RIGHT
	Canines	all	5 pcs	5 pcs
	Premolars	all	5 pcs	5 pcs
	Molars	mix	6 pcs	6 pcs



80 pcs Premolars, Molars both sides, all sizes

Art. 9-80	Group	Size	LEFT	RIGHT
	Premolars	all	24 pcs	24 pcs
	Molars	all	16 pcs	16 pcs



108 pcs Canines, Premolars, Molars both sides, all sizes

Art. 9-108	Group	Size	LEFT	RIGHT
	Canines	all	15 pcs	15 pcs
	Premolars	all	15 pcs	15 pcs
	Molars	all	24 pcs	24 pcs



POLYCARBONATE CROWNS

Polycarbonate crowns are extremely attrition-proof. They may be adapted easily to the gingival line by means of a cutter. The crowns protect dentine against the influence of high and low temperatures, as well as protect a prepared tooth until a complete crown restoration is made. Polycarbonate crowns may be used in making temporary (provisional) bridges.



1. After removing the enamel, remove the smear layer from the dentine. Disinfect the whole surface up to the line of cervical zone after preparation. Block all dentinal tubules with appropriate preparation.
2. Choose appropriate crown size, match the cervical part by cutting it, so that it reaches only the gingival line (PLEASE NOTE! No subgingival nor supragingival matching!), and then polish the sharp edges of the crown. The polycarbonate crown should be disinfected with e.g. ethanol.
3. Fill the polycarbonate crown with cement in a shade matching the colour to the colour of the adjacent teeth.
4. Place the crown filled with temporary cement in required position and hold it until the material is hardened—remove the excess material.

The crown replaces a tooth in the dental arch, protecting the dentine and the pulp against the harmful influence of high and low temperatures, as well as against the attrition.

Art. 1-T-144

Set of polycarbonate crowns for all the teeth groups - 144 pcs in a handy compartment box.

144 pcs ALL GROUPS both sides, all sizes

Group	Size	LEFT	RIGHT
Incisors	all	19 pcs	19 pcs
Lower Incisors	all	10 pcs	10 pcs
Laterals	all	10 pcs	10 pcs
Canines	all	15 pcs	15 pcs
Premolars	all	10 pcs	10 pcs
Molars	all	8 pcs	8 pcs



Lower Incisors

The polycarbonate crowns for Lower Incisors are universal, and may be applied to either side - left or right.

**5
pcs**

**Lower Incisors
bilateral, one size**

Art.No.	PL Size	INT Size	Quant.
2-T-05-501	501	64	5 pcs
2-T-05-502	502	63	5 pcs
2-T-05-503	503	62	5 pcs
2-T-05-504	504	61	5 pcs
2-T-05-505	505	60	5 pcs



**108
pcs**

**Lower Incisors
bilateral, all sizes**

Art. 2-T-108

PL Size	INT Size	Quantity
501	64	12 pcs
502	63	36 pcs
503	62	30 pcs
504	61	18 pcs
505	60	12 pcs



Incisors

5
pcs

Incisors - **LEFT**
one side, one size

Art. No. PL Size INT Size Quantity

3-T-05-121	121	15	5 pcs
3-T-05-122	122	16	5 pcs
3-T-05-123	123	17	5 pcs
3-T-05-124	124	19	5 pcs
3-T-05-125	125	102	5 pcs
3-T-05-126	126	103	5 pcs

5
pcs

Incisors - **RIGHT**
one side, one size

Art. No. PL Size INT Size Quantity

3-T-05-111	111	14	5 pcs
3-T-05-112	112	13	5 pcs
3-T-05-113	113	12	5 pcs
3-T-05-114	114	10	5 pcs
3-T-05-115	115	101	5 pcs
3-T-05-116	116	100	5 pcs

108
pcs

Incisors
both sides, all sizes

PL Size INT Size Side Quantity

121	15	left	9 pcs
122	16	left	9 pcs
123	17	left	9 pcs
124	19	left	9 pcs
125	102	left	9 pcs
126	103	left	9 pcs
111	14	right	9 pcs
112	13	right	9 pcs
113	12	right	9 pcs
114	10	right	9 pcs
115	101	right	9 pcs
116	100	right	9 pcs

Art. 3-T-108



Laterals

**5
pcs**

Laterals - LEFT
one side, one size

Art. No. PL Size INT Size Quantity

4-T-05-221	221	26	5 pcs
4-T-05-222	222	27	5 pcs
4-T-05-223	223	28	5 pcs
4-T-05-224	224	29	5 pcs
4-T-05-225	225	200	5 pcs

**5
pcs**

Laterals - RIGHT
one side, one size

Art. No. PL Size INT Size Quantity

4-T-05-211	211	23	5 pcs
4-T-05-212	212	22	5 pcs
4-T-05-213	213	21	5 pcs
4-T-05-214	214	20	5 pcs
4-T-05-215	215	2	5 pcs

**108
pcs**

Laterals
both sides, all sizes

Art. 4-T-108

PL Size	INT Size	Side	Quantity
221	26	left	9 pcs
222	27	left	9 pcs
223	28	left	12 pcs
224	29	left	12 pcs
225	200	left	12 pcs
211	23	right	9 pcs
212	22	right	9 pcs
213	21	right	12 pcs
214	20	right	12 pcs
215	2	right	12 pcs



Canines

5
pcs

Canines - LEFT
one side, one size

Art. No.	PL Size	INT Size	Quantity
5-T-05-321	321	35	5 pcs
5-T-05-322	322	37	5 pcs
5-T-05-323	323	38	5 pcs
5-T-05-324	324	39	5 pcs
5-T-05-325	325	302	5 pcs
5-T-05-326	326	303	5 pcs

5
pcs

Canines - RIGHT
one side, one size

Art. No.	PL Size	INT Size	Quantity
5-T-05-311	311	34	5 pcs
5-T-05-312	312	32	5 pce
5-T-05-313	313	31	5 pcs
5-T-05-314	314	30	5 pcs
5-T-05-315	315	301	5 pcs
5-T-05-316	316	300	5 pcs

108
pcs

Canines
both sides, all sizes

PL Size	INT Size	Side	Quantity
321	35	left	6 pcs
322	37	left	9 pcs
323	38	left	12 pcs
324	39	left	12 pcs
325	302	left	9 pcs
326	303	left	6 pcs
311	34	right	6 pcs
312	32	right	9 pcs
313	31	right	12 pcs
314	30	right	12 pcs
315	301	right	9 pcs
316	300	right	6 pcs

Art. 5-T-108



Premolars

**5
pcs**

**Premolars
bilateral, one size**

Art. No.	PL Size	INT Size	Quant.
6-T-05-401	401	44	5 pcs
6-T-05-402	402	43	5 pcs
6-T-05-403	403	42	5 pcs
6-T-05-404	404	41	5 pcs
6-T-05-405	405	40	5 pcs

The polycarbonate crowns for Premolars are universal, and may be applied to either side - left or right.



**108
pcs**

**Premolars
bilateral, all sizes**

Art. 6-T-108

PL Size	INT Size	Quantity
401	44	30 pcs
402	43	30 pcs
403	42	24 pcs
404	41	12 pcs
405	40	12 pcs



Molars

5
pcs

Molars - **LEFT**
one side, one size

Art. No. PL Size INT Size Quantity

7-T-05-621	621	75	5 pcs
7-T-05-622	622	76	5 pcs
7-T-05-623	623	77	5 pcs
7-T-05-624	624	78	5 pcs
7-T-05-625	625	79	5 pcs

5
pcs

Molars - **RIGHT**
one side, one size

Art. No. PL Size INT Size Quantity

7-T-05-611	611	74	5 pcs
7-T-05-612	612	73	5 pcs
7-T-05-613	613	72	5 pcs
7-T-05-614	614	71	5 pcs
7-T-05-615	615	70	5 pcs



108
pcs

Molars
both sides, all sizes

PL Size INT Size Side Quantity

621	75	left	12 pcs
622	76	left	16 pcs
623	77	left	12 pcs
624	78	left	8 pcs
625	79	left	6 pcs
611	74	right	12 pcs
612	73	right	16 pcs
613	72	right	12 pcs
614	71	right	8 pcs
615	70	right	6 pcs

Art. 7-T-108



Anteriors & Posteriors

**108
pcs**

**Incisors, Lower Incisors,
Laterals
both sides, all sizes**

Art. 8-T-108

Group	Size	LEFT	RIGHT
Incisors	all	18 pcs	18 pcs
Lower Incisors	all	18 pcs	18 pcs
Laterals	all	18 pcs	18 pcs



**108
pcs**

**Canines, Premolars, Molars
both sides, all sizes**

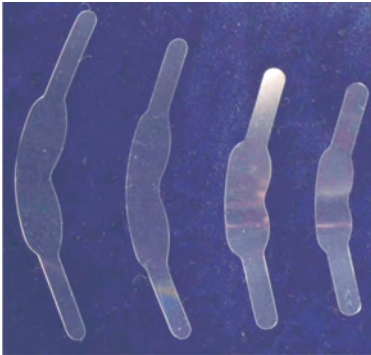
Art. 9-T-108

Group	Size	LEFT	RIGHT
Canines	all	21 pcs	21 pcs
Premolars	all	21 pcs	21 pcs
Molars	all	12 pcs	12 pcs



Flat Polyester Matrices

In restorations of very small Class II defects in Premolars and Molars you can apply **AnGer** flat – non-profiled - polyester matrices.



50 pcs Flat Matrices
Foil A - 0.075 mm

Art. No.	Group	Size
1101 A	Molar	L
1102 A	Molar	M
1103 A	Premolar	S
1104 A	Premolar	XS

50 pcs Flat Matrices
Foil B - 0.050 mm

Art. No.	Group	Size
1101 B	Molar	L
1102 B	Molar	M
1103 B	Premolar	S
1104 B	Premolar	XS

Assortment 1101A contains 50 pcs of Molar Flat Matrices, size L, 0.075 mm thick.



Use the retainer exactly the same way as with shaped polyester matrices.



For Class II restorations it is best to use **AnGer** Self-Locking Polyester Matrices. As there is no need of employing any additional tools or instruments, such as heavy metal holder (retainer) necessary for the other types of matrices, **AnGer** products guarantee comfort for both - dentists and patients. Moreover, the matrices are very easy to use.

Self-Locking Matrices

4 sizes better choice!

1



Once a tooth is ready for filling, slide the self-locking matrix on – brim with the two curves towards the gum.



2



Tighten the matrix by pressing the ring starting at the very tip of the metal plate –flat section.

3



When the metal ring is locked, bend the metal plate aside. That assures good work conditions.

4



Secure the polyester matrix using one of **AnGer** light-conductive or elastic interdental wedges – depending on your needs.

5



Fill the defect with chosen material and cure.

To satisfy individual needs of our clients, we offer matrices of two thicknesses:

A – 0.075 mm and **B – 0.050 mm** thick – choose foil that suits your work best!



Self-Locking Matrices

16 pcs Self-Locking Matrices Foil A - 0.075 mm

Art. No.	Group	Size
1001 A	Molar	L
1002 A	Molar	M
1003 A	Premolar	S
1004 A	Premolar	XS

16 pcs Self-Locking Matrices Foil B - 0.050 mm

Art. No.	Group	Size
1001 B	Molar	L
1002 B	Molar	M
1003 B	Premolar	S
1004 B	Premolar	XS

40 pcs Self-Locking Matrices Foil A - 0.075 mm all types & sizes

Art. No.	Group	Pcs	Size
12 A	Molar	5	L
	Molar	15	M
	Premolar	15	S
	Premolar	5	XS

40 pcs Self-Locking Matrices Foil B - 0.050 mm all types & sizes

Art. No.	Group	Pcs	Size
12 B	Molar	5	L
	Molar	15	M
	Premolar	15	S
	Premolar	5	XS

40 pcs Self-Locking Matrices Foil A - 0.075 mm Molars, all sizes

Art. No.	Group	Pcs	Size
13 A	Molar	20	L
	Molar	20	M

40 pcs Self-Locking Matrices Foil B - 0.050 mm Molars, all sizes

Art. No.	Group	Pcs	Size
13 B	Molar	20	L
	Molar	20	M

40 pcs Self-Locking Matrices Foil A - 0.075 mm Premolars, all sizes

Art. No.	Group	Pcs	Size
14 A	Premolar	20	S
	Premolar	20	XS

40 pcs Self-Locking Matrices Foil B - 0.050 mm Premolars, all sizes

Art. No.	Group	Pcs	Size
14 B	Premolar	20	S
	Premolar	20	XS



Assortments No. 12, 13 and 14 are available in boxes like the one presented.

Shaped Polyester Matrices

If you are used to work with retainers (tensors) in Class II restorations, it is best to use **AnGer** Shaped Polyester Matrices. The matrices provide appropriate firm hold of a tooth without causing unnecessary deformations.



1

The tooth is ready for filling.



2

Pick the appropriate size of a matrix and fasten it in a retainer (tensor). Place the shaped polyester matrix round the tooth, then slide the matrix on – brim with two curves towards the gum.



3

When dealing with tightly fitted teeth, insert a transparent interdental wedge from one side and slide the matrix on so that the matrix edge passes through the contact point. Repeat this sequence on the other side.



4

4. When the matrix is in the appropriate position, press the elastic or transparent wedges against it from both sides.



5

A correctly inserted matrix, secured with two transparent wedges makes the work easy and assures high quality and precision of reconstruction done. During polymerisation the wedges allow for simultaneous illumination of the whole filling surface.

To satisfy individual needs of our clients, we offer matrices of two thicknesses:

A – 0.075 mm and B – 0.050 mm thick –
choose foil that suits your work best!



Shaped Polyester Matrices

16 pcs Shaped Matrices
Foil A - 0.075 mm

Art. No.	Group	Size
1111 A	Molar	L
1112 A	Molar	M
1113 A	Premolar	S
1114 A	Premolar	XS

16 pcs Shaped Matrices
Foil B - 0.050 mm

Art. No.	Group	Size
1111 B	Molar	L
1112 B	Molar	M
1113 B	Premolar	S
1114 B	Premolar	XS

40 pcs Shaped Matrices
Foil A - 0.075 mm all types & sizes

Art. No.	Group	Pcs	Size
15 A	Molar	5	L
	Molar	15	M
	Premolar	15	S
	Premolar	5	XS

40 pcs Shaped Matrices
Foil B - 0.050 mm all types & sizes

Art. No.	Group	Pcs	Size
15 B	Molar	5	L
	Molar	15	M
	Premolar	15	S
	Premolar	5	XS

40 pcs Shaped Matrices
Foil A - 0.075 mm Molars, all sizes

Art. No.	Group	Pcs	Size
16 A	Molar	20	L
	Molar	20	M

40 pcs Shaped Matrices
Foil B - 0.050 mm Molars, all sizes

Art. No.	Group	Pcs	Size
16 B	Molar	20	L
	Molar	20	M

40 pcs Shaped Matrices
Foil A - 0.075 mm Premolars, all sizes

Art. No.	Group	Pcs	Size
17 A	Premolar	20	S
	Premolar	20	XS

40 pcs Shaped Matrices
Foil B - 0.050 mm Premolars, all sizes

Art. No.	Group	Pcs	Size
17 B	Premolar	20	S
	Premolar	20	XS



Assortments No. 15, 16 and 17 are available in boxes like the one presented.

Cervical Polyester Matrices

1



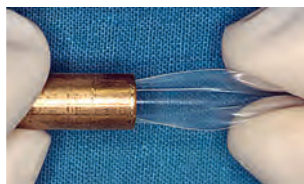
When dealing with Class V cervical defect, it is very important to provide smooth filling surface. **AnGer** cervical matrix makes it possible to achieve in a very easy way and short time.

3



Pull out either of the ends, depending on the tooth size. Insert the chosen end – wider or narrower – under the gum and gently press it against the tooth surface. Polymerise the filling through the matrix. Smooth surface achieved in such way lowers the risk of tartar and plaque and prevents troublesome gum irritations.

2



The cervical matrix is a polyester strip with two endings: a wide one and a narrow one. Delicately squeeze the flat lateral margins, so that the strip turns into a tube, and slide it into the supplied holder. The set includes a standard holder with the inside diameter of 6mm. The holder with the diameter of 4mm (18-T-4) applies in lower incisors, whereas the 7mm-holder (18-T-7) in large teeth.



50
pcs

Cervical Polyester Matrices
Set

Art. No.	Quantity
18	50 plus 6mm-holder

50
pcs

Cervical Polyester Matrices
Refill

Art. No.	Quantity
18-Refill	50

1
pc

Cervical Matrix Holder
one size

Art. No.	Internal diameter	Length
18-T-4	4 mm	20 mm
18-T-6	6 mm	20 mm
18-T-7	7 mm	20 mm

Transparent Polyester Cones

1

When dealing with total lack of a tooth crown, before restoration begins, by means of glass ionomer reconstruct first on the screw the tooth "core" using **AnGer** polyester cones.

2

Once the screw needed for crown restoration is placed in the tooth root, choose an appropriate cone size. To prevent formation of air bubbles in the filling, perforate top of the cone before putting the filling in.

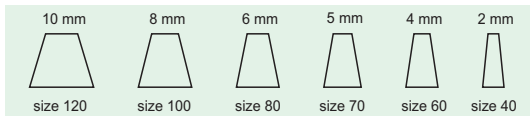
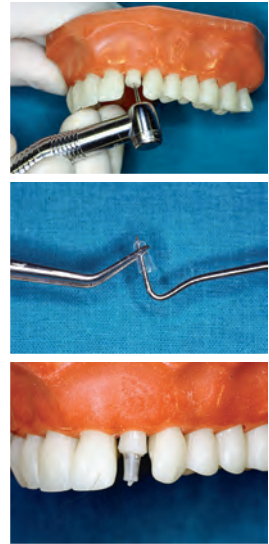
3

Fill the chosen cone with restorative material and place on screw. Now you can start a composite crown restoration around so reconstructed "core". The layer method with the application of **AnGer** polyester crown forms will be a perfect solution.

For polyester cones the code **19-10-60** stands for:

19 – catalogue code for polyester cones, **10** – a box containing 10pcs of cones

60 – max. diameter of the cone in 1/10 mm – in this example 6 mm



The top diameter of each cone is 2 mm smaller than the bottom diameter indicated in the code.

10 pcs

Polyester Cones one size

Art. No.	Open bottom diameter	Top diam.	Size
19-10-40	max 4 mm	2 mm	40
19-10-60	max 6 mm	4 mm	60
19-10-70	max 7 mm	5 mm	70
19-10-80	max 8 mm	6 mm	80
19-10-100	max 10 mm	8 mm	100
19-10-120	max 12 mm	10 mm	120



36 pcs

Polyester Cones all sizes

Art. No.	Pieces	Size
19-36	6	40
	6	60
	6	70
	6	80
	6	100
	6	120



OCCUSAL MATRICES



Occlusal matrices help to rebuild cusps in molars and premolars that may get damaged due to caries, wearing, as well as ageing. Made of polycarbonate, the occlusal matrices are characterised by high transparency, and conduct the polymerisation light perfectly. The size of a matrix may be adjusted to particular needs by means of a cutter.



Prepare tooth for restoration. Fill in the cavity with filling material, apply the previously chosen matrix and harden the material. After the matrix has been removed it is necessary to repeat the hardening process.

10 pcs

Occlusal Matrices Molars, one size

Art. No.	Size
23-10-XL	XL
23-10-L	L
23-10-M	M
23-10-S	S
23-10-XS	XS

10 pcs

Occlusal Matrices Premolars, one size

Art. No.	Size
24-10-XL	XL
24-10-L	L
24-10-M	M
24-10-S	S
24-10-XS	XS



**60
pcs**

Occlusal Matrices Molars, all sizes

Art. No.	Size	Pieces
23-60	XL	12
	L	12
	M	12
	S	12
	XS	12

**60
pcs**

Occlusal Matrices Premolars, all sizes

Art. No.	Size	Pieces
24-60	XL	12
	L	12
	M	12
	S	12
	XS	12

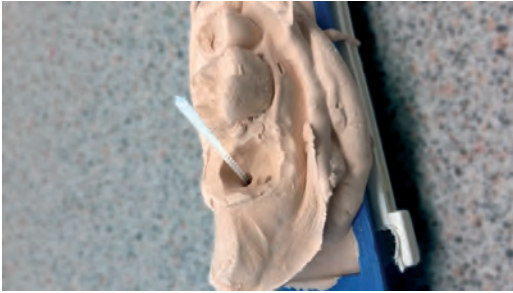
**60
pcs**

Occlusal Matrices Premolars & Molars, all sizes

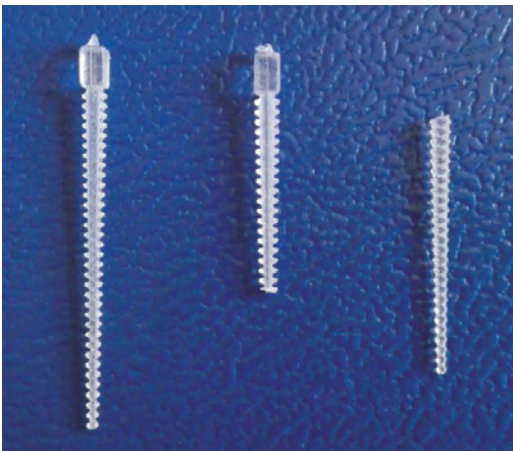
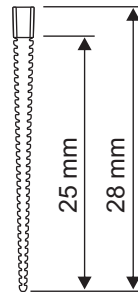
Art. No.	Group	Size	Pieces
25-60	Molars	XL	6
		L	6
		M	6
		S	6
		XS	6
	Premolars	XL	6
		L	6
		M	6
		S	6
		XS	6



The ribbed pins are a perfect retention and tightening for impressions of prepared tooth canals. The ribs made it reliable the impression material adheres. They are characterized by considerable endurance and flexibility.



Next application possibility of the pins is tightening the models of corono-radicular inlays made of wax or resin that burns residue-free, before a metal cast is made.



The endopin may be adjusted by cutting it from the thicker or thinner side, depending on the canal section ("the diameter"). When dealing with thin canals, it is necessary to cut off the thicker part of the endopin together with the head which does not reduce its functionality by no means.

The endopins are available in two types of packaging:

**50
pcs**

Endopins

Art. No.	Quantity
27-50	50



**100
pcs**

Endopins

Art. No.	Quantity
27-100	100



Polyester Scalers

The polyester flexible scaler is designed for removing plaque from the interdental spaces. You may also recommend it to the patients for individual use. The scaler is an alternative to a dental floss. The built-in blade makes it easier to cut off the strip of desired length by one single move.



4 m Polyester Flexible Scaler

Art. No.	Width	Thickness
1176	6 mm	0.050 mm

Slide out 10cm of tape and cut on the serrated blade. Hold the strip in two places between thumbs and forefingers leaving about 1cm-gap and place the strip into the interdental space. Clean the surface between teeth with rough side of the strip by 3-4 stroking motions.



Metal Flexible Scalers

We recommend REMOVELLE - metal flexible scalers for removing tartar and plaque from the interdental spaces. A box includes 2 meters of 5mm wide and 0.045mm thick tape. The scalers are produced in two versions: as fully perforated or with smooth sections that make it easier to insert the scaler between tightly fitted teeth. For both versions there are available two coarseness types of the edges of perforation apertures: coarse or fine. This product may be sterilised by any method.



2 m

Metal Flexible Scaler with smooth sections

Art. No.	Coarseness	Width	Thickness
1271	coarse	5 mm	0.045 mm
1273	fine	5 mm	0.045 mm



2 m

Metal Flexible Scaler fully perforated

Art. No.	Coarseness	Width	Thickness
1275	coarse	5 mm	0.045 mm
1277	fine	5 mm	0.045 mm



Cut a 10cm strip by scissors. Hold the strip in two places between thumbs and forefingers leaving about 1cm-gap and place the strip into the interdental space. Clean the surface between teeth with rough side of the strip by 3-4 stroking motions.

Transparent Polyester Bands

AnGer Polyester Bands are made of 0.036mm, 0.050mm or 0.075mm thick polyester foil. That makes it easier to fit them into the interdental spaces. Offered in 3 sizes – 6, 8 and 10mm wide, each 15m long. Packed in a tooth-shaped dispenser. The packaging is both pleasant-looking and functional. Just slide the tape out with your thumb for the desired length and use the built-in serrated blade to cut off the band. It is also environmentally friendly as you can easily refill it with a new band.

15 m

Polyester Band in tooth-shaped box, easy to refill

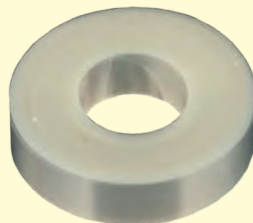
Art. No.	Width	Thickness
1141	6 mm	0.036 mm
1142	8 mm	0.036 mm
1143	10 mm	0.036 mm
1144	6 mm	0.050 mm
1145	8 mm	0.050 mm
1146	10 mm	0.050 mm
1147	6 mm	0.075 mm
1148	8 mm	0.075 mm
1149	10 mm	0.075 mm



15 m

Polyester Band Refills

Art. No.	Width	Thickness
1141-Refill	6 mm	0.036 mm
1142-Refill	8 mm	0.036 mm
1143-Refill	10 mm	0.036 mm
1144-Refill	6 mm	0.050 mm
1145-Refill	8 mm	0.050 mm
1146-Refill	10 mm	0.050 mm
1147-Refill	6 mm	0.075 mm
1148-Refill	8 mm	0.075 mm
1149-Refill	10 mm	0.075 mm



15 m

Polyester Band in cardboard box

Art. No.	Width	Thickness
1151	6 mm	0.036 mm
1152	8 mm	0.036 mm
1153	10 mm	0.036 mm
1154	6 mm	0.050 mm
1155	8 mm	0.050 mm
1156	10 mm	0.050 mm
1157	6 mm	0.075 mm
1158	8 mm	0.075 mm
1159	10 mm	0.075 mm



Metal Matrix Bands

AnGer Metal Matrix Bands make it possible to separate a treated tooth securely and restore it without undesired influence on adjacent teeth. The use of appropriate retainer allows for achieving desired tension of the band. However, it is important to remember that if the treated tooth's lateral walls are thin, the pressure of band upon the tooth must not be greater than the specified marginal values. By large defects it is better to use the shaped polyester matrices or the self-locking matrices.

3 m

Matrix Band in tooth-shaped box, easy to refill

Art. No.	Width	Thickness
1225	5 mm	0.030 mm
1226	6 mm	0.030 mm
1227	7 mm	0.030 mm
1228	8 mm	0.030 mm
1245	5 mm	0.045 mm
1246	6 mm	0.045 mm
1247	7 mm	0.045 mm
1248	8 mm	0.045 mm



3 m

Matrix Band Refills

Art. No.	Width	Thickness
1225-Refill	5 mm	0.030 mm
1226-Refill	6 mm	0.030 mm
1227-Refill	7 mm	0.030 mm
1228-Refill	8 mm	0.030 mm
1245-Refill	5 mm	0.045 mm
1246-Refill	6 mm	0.045 mm
1247-Refill	7 mm	0.045 mm
1248-Refill	8 mm	0.045 mm



3 m

Matrix Band in cardboard box

Art. No.	Width	Thickness
1235	5 mm	0.030 mm
1236	6 mm	0.030 mm
1237	7 mm	0.030 mm
1238	8 mm	0.030 mm
1255	5 mm	0.045 mm
1256	6 mm	0.045 mm
1257	7 mm	0.045 mm
1258	8 mm	0.045 mm



Light-Conductive Interdental Wedges

1



When the interdental space is tight, and it is difficult to insert a matrix, band, or crown - use **AnGer** interdental wedges to increase temporarily the distance between the contact points. As soon as the side of the matrix reaches the contact point, slowly remove the wedge placing matrix the desired way.

2



Once the matrix or crown is on the tooth - apply **AnGer** light-conductive wedge to press and secure the matrix to the tooth to be filled. Four sizes of wedges are offered to give better choice.

3



The main purpose for **AnGer** wedges is to lead the polymerisation light evenly throughout the entire filling and to prevent uneven shrinkage and strains in restoration material.

100 pcs

Transparent Wedges
one size

Art. No.	Size	Type
20-1091	L	thick/large
20-1092	M	medium
20-1093	S	slim
20-1094	XS	ultra slim



200 pcs

Transparent Wedges
all sizes

Art. No.	Size	Pieces	Type
20	L	50	thick/large
	M	50	medium
	S	50	slim
	XS	50	ultra slim



Soft Interdental Wedges

AnGer soft and elastic interdental wedges are a better choice to the standard wooden wedges:

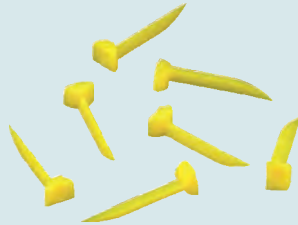
- they do not absorb saliva, blood or other fluids
- are easy to insert in between the teeth
- are elastic & soft
- instantly adapt to the tooth shape
- do not stain the filling
- do not cause undesired tensions
- do not cause discomfort or pain
- are easy to pull out

The soft elastic wedges are available in four sizes which give choice to pick the best size to fit in between the teeth. The sizes are colour-coded.

100 pcs

Soft Wedges one size

Art. No.	Size	Type	Colour
21-1081	L	thick/large	green
21-1082	M	medium	blue
21-1083	S	slim	red
21-1084	XS	ultra slim	yellow



200 pcs

Soft Wedges all sizes

Art. No.	Size	Pieces	Type	Colour
21	L	50	thick/large	green
	M	50	medium	blue
	S	50	slim	red
	XS	50	ultra slim	yellow



ENDOLUCENT

ENDOLUCENT - a light-conductive canal instrument necessary in perforated canal fillings.

APPLICATION

After initial procedures fill the canal in to the level below perforation. Choose an appropriate size of Endolucent and adjust its length. Insert the tool prepared this way into the canal and fill in the perforation according to the procedures.



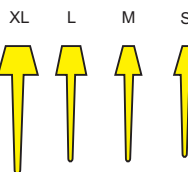
Endolucent may be also applied to tamper and tighten the first filling layer in tooth crown after finishing the endodontic procedures. The conical shape of tools' head will make the material tighten more and more on the walls during rotation, preventing formation of air bubbles.



10 pcs

Endolucent one size

Art. No.	Size
26-10-XL	XL
26-10-L	L
26-10-M	M
26-10-S	S



60 pcs

Endolucent all sizes

Art. No.	Size	Quantity
26-60	XL	15
	L	15
	M	15
	S	15



Universal Retainer

The universal Tofflemire type retainer may be used for tightening polyester as well as metal matrices and bands of different widths and thicknesses. A unique construction with an open fastening slit allows to put bands of any width in it, including all the bands manufactured by **AnGer**.

**1
pc**

UNIVERSAL RETAINER

Code	Name
1299	Universal Tofflemire Type Retainer



Crown Cutter

For cutting permanent crowns (also metal ones) and for adjusting (trimming) polycarbonate crowns we offer tungsten carbide crown cutter CB34L. During application of the cutter please remember to draw it near the surface to be cut at an angle as acute as possible. The more the cutter will be parallel to the wall to be cut, the greater certainty it will not be damaged.

REMEMBER! – cut with the side, not frontal, edge of the cutter.

**1
pc**

CROWN CUTTER

Code	Name
CB34L	Tungsten Carbide Crown Cutter



Tooth-Shaped Clocks

Our dental gadgets will decorate every surgery, as well as waiting room. Available in a variety of colours. May be also a great gift for the youngest patients.

ALL THE GADGETS MAY BE DELIVERED WITH YOUR LOGO OR COMPANY DETAILS!

MOQ depends on the type of gadget.

Art. 2001

Tooth-Shaped Wall Clock made of rigid foil

Dimensions: 23 x 33 cm

Art. 2001-1 - White

Art. 2001 is also available as a self-assembly kit to decrease the shipping costs!



Art. 2021

Tooth-Shaped Wall Clock

made of hard plastic

Dimensions: 22 x 28 cm

Art. 2021-1 - White Art. 2021-4 - Green
Art. 2021-2 - Red Art. 2021-41 - Lime Green
Art. 2021-21 - Orange Art. 2021-5 - Yellow
Art. 2021-3 - Blue Art. 2021-6 - Black
Art. 2021-32 - Sapphire Blue



Art. 2011

Tooth-Shaped Desk Clock

made of hard plastic

Dimensions: 13 x 16 cm

Colours available as above.

Hard plastic clocks (Art. 2021 and 2011) may be delivered according to your own shape design by large order quantity.

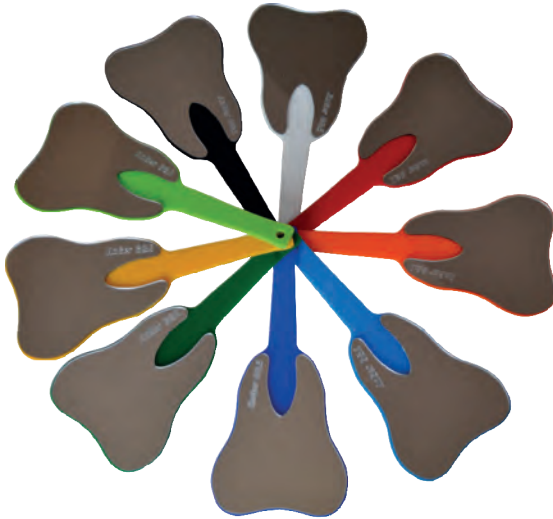


List of available colours on www.anger.com.pl

Tooth-Shaped Mirrors with Handle

**Art. 3004**

Tooth-Shaped Mirror with Handle
 Dimensions: 14 x 27 cm
 Colours available as in Art. 2021

**Art. 3008**

Small Tooth-Shaped Mirror with Handle
 Dimensions: 10 x 21 cm
 Colours available as in Art. 2021



Tooth-Shaped Mirrors & Key Rings



Art. 3001

Tooth-Shaped Mirror
Dimensions: 13 x 16 cm



Art. 3002

Tooth-Shaped Desk Mirror -
fold-up stand
Dimensions: 14 x 16 cm



Art. 3003

Tooth-Shaped Mirror
Dimensions: 6 x 8 cm



Art. 3005

Tooth-Shaped Wall Mirror
with adhesive tape at the back
Dimensions: 22 x 28 cm



Art. 3006

Tooth-Shaped
Wall Mirror with
adhesive tape at the back
Dimensions: 27.5 x 35 cm



Art. 3007

Small Tooth-Shaped Mirror
Dimensions: 9.5 x 11.5 cm



Art. 4011

Tooth-Shaped Key-Ring
Dimensions: 40 x 50 mm



Art. 4012

Tooth-Shaped Key-Ring
Dimensions: 35 x 28 mm

Both sizes of the key-rings are available
in a wide variety of colours.

Our distributors worldwide

Algeria
Argentina
Armenia
Belgium
Bosnia & Herzegovina
Bulgaria
Croatia
Czech Republic
Denmark
Egypt
Estonia
Ecuador
France
Germany
Greece
Hungary
Iran
Iraq (Erbil)
Israel
Italy
Japan
Jordan
Kosovo



Kuwait
Kazakhstan
Lebanon
Lithuania
Macedonia
Morocco
Panama
Philippines
Poland
Portugal
Republic of South Africa
Romania
Senegal
Serbia
Slovakia
Slovenia
Spain
Tunisia
Turkey
Ukraine
United Arab Emirates
United Kingdom
USA (California)



AnGer G&A Dental Manufacturing Enterprise

tel. +48 12 626 53 55, fax +48 12 626 53 60

www.anger.com.pl

export@anger.com.pl

exportdent@gmail.com