

NEOLIX

New feeling
in endodontics

neoniti

Single NiTi rotary file

Safe, Simple & Smart

Why



Because of our exclusive process

Our innovative EDM process allows to manufacture a brand new NiTi file that enjoys a unique and superior behaviour. The file is generally **more flexible**, although its surface is **specifically hard** and **naturally rough**. Thanks to this exclusive combination of characteristics and its rectangular cross section, NEONITI features superior cutting edges, a built-in abrasive surface and a progressive flexibility, resulting in an unmatched **CUTTING EFFICIENCY** and **RESISTANCE TO FRACTURE**.



Advantages

- ✓ **Anti-screwing** effect
- ✓ **High cutting** efficiency
- ✓ **High resistance** to fracture
- ✓ **Efficient cleaning** to the apex
- ✓ Allows **endodontic treatment** or **retreatment**
- ✓ **One single shaper file** for a complete treatment
- ✓ Also suitable for **difficult** canals (thin, curved, calcified)
- ✓ Production of **small debris** to reduce the risk of file blocking
- ✓ Possible **precurving** to negotiate a difficult access or a ledge
- ✓ **Respect** of the canal anatomy (no transportation, no ledging)

Recommended use

- Crown down technique
- Continuous rotation
- Speed 300 - 500 rpm
- Torque limit 1.5 N. cm
- Constantly irrigate
- Frequently wipe the file

Filling the canal

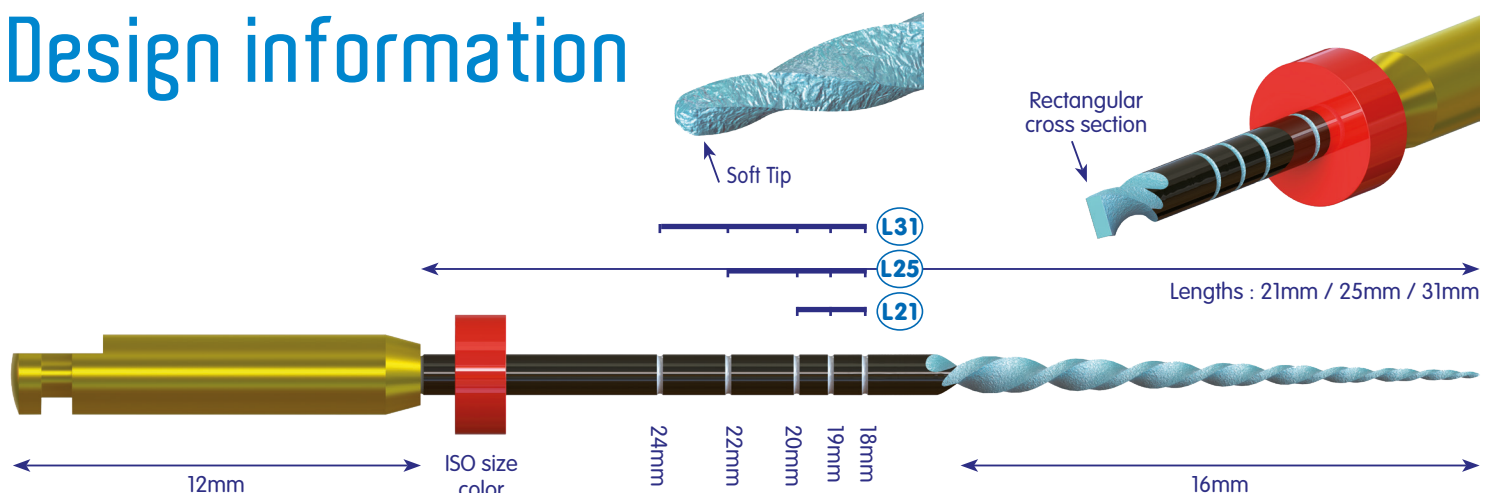
We generally recommend to use Gutta Percha points Size n°25 - Taper .06

For further information

Please refer to the instruction manual

	Size	n°25	n°15	n°20	n°25	n°40
	Taper	.12	.03	.06	.06	.04
Available lengths	(L15)	15mm	-	-	-	-
	(L21)	-	21mm	21mm	21mm	21mm
	(L25)	-	25mm	25mm	25mm	25mm
	(L31)	-	31mm	31mm	31mm	31mm

Design information



Manufacturing principle

Worldwide unique manufacturing process based on Electric Discharge Machining (EDM)



- Progressive flexibility
- Hard cutting edges
- Abrasive surface

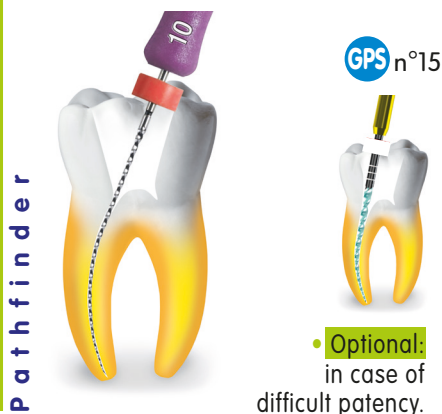


EDM process consists of sparks produced by high energy and high frequency electric discharges between the metal workpiece (e.g. NEONITI file) and an electrode (e.g. the cutting wire). This leads to locally melting and evaporating the workpiece material resulting in the finished product desired geometry.

Simple protocol

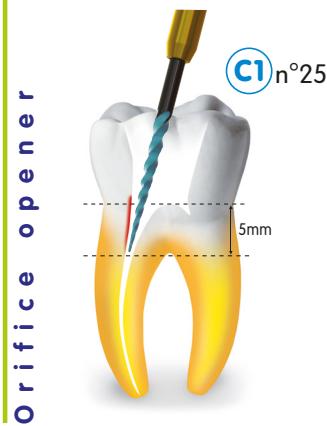
1 Make the glidepath

- Prepare the access cavity.
- Establish WL and make the canal patency with K6, K8, K10 or K15 file.



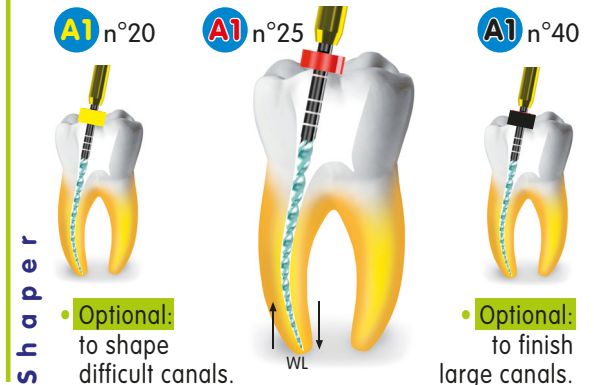
2 Widen the canal orifice

- Remove dentine interference.
- Circumferential brushing action.



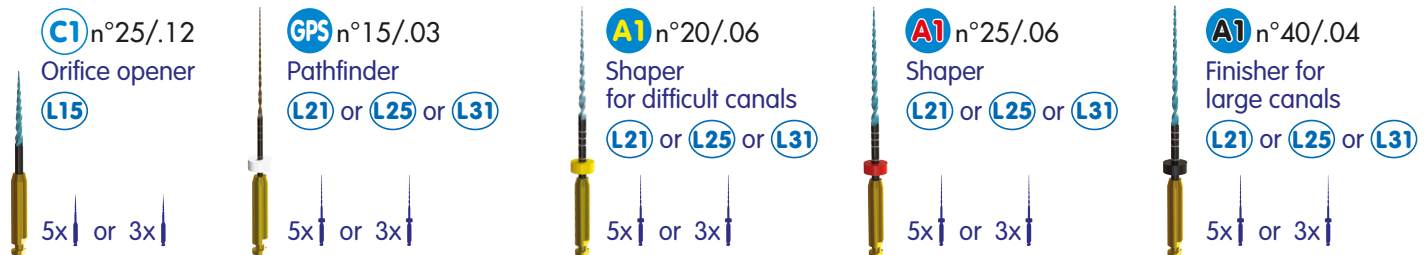
3 Shape the canal to the WL

- Take A1 to the middle third using 3 or 4 circumferential brushing actions.
- Confirm WL again with a K file.
- Take A1 to WL using a pecking motion.



Product information

REFILL PLATES



ASSORTMENTS

Starter kit

- (L21) or (L25)
- Except C1
- (L15)



Assorted kit

- (L21) or (L25)
- Except C1
- (L15)



Intro kit

- (L21) or (L25)
- Except C1
- (L15)



PACKAGING

Standard box

10 plates of 5 files



Baby box

5 plates of 3 files

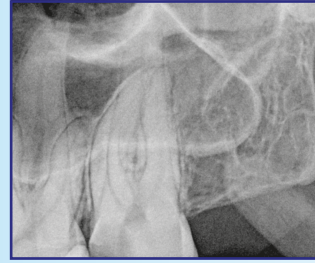
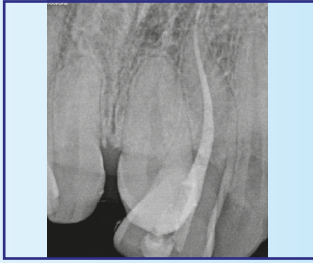


Also suitable for difficult canals

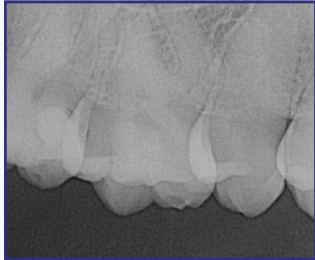
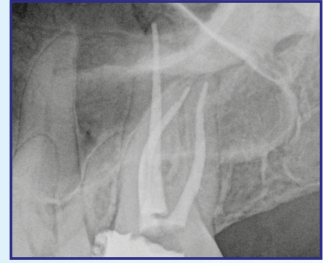
neoniti



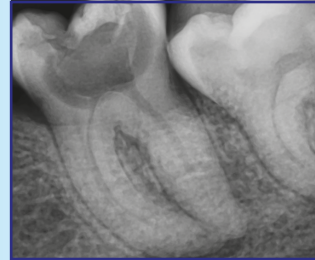
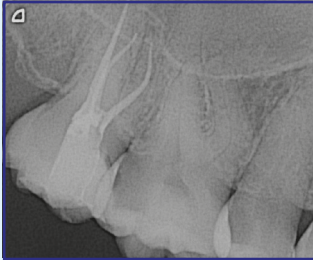
No. 21
Dr. Ali Afzal - Udaipur (India)



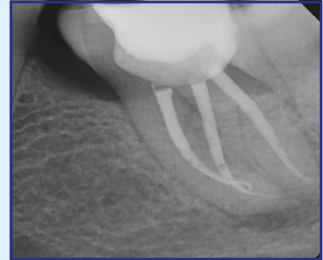
No. 27
Dr. Mohsen Aminsobhani - Tehran (Iran)



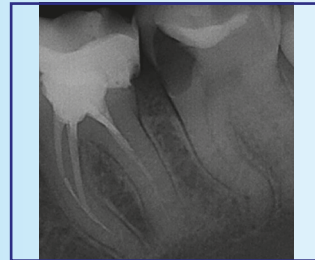
No. 17
Dr. Cyril Biesse - Bordeaux (France)



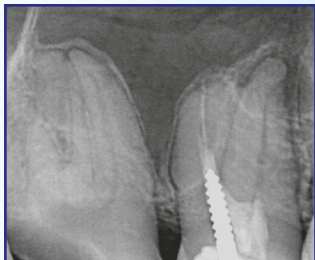
No. 37
Dr. Ștefan Jitaru - Bucarest (Romania)



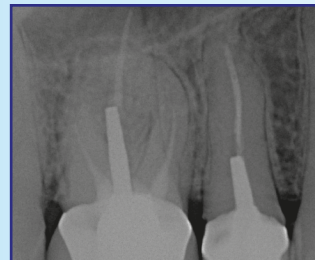
No. 46
Dr. Edit Maros - Laval (France)



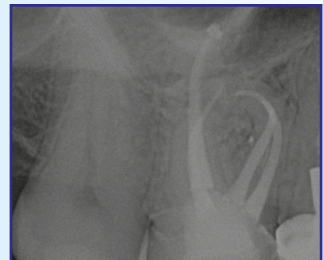
No. 37
Dr. Jiri Skrland - Prague (Czech Republic)



No. 15 & 16 (treatment and retreatment)
Dr. Arnaud Stanurski - Paris (France)



No. 16 (retreatment)
Dr. Arnaud Stanurski - Paris (France)



Safe, Simple & Smart



Environment friendly - Manufactured in closed circuit clean water.
Oil free process prevents the spoilage of environment and operators health.
Made in France – Neolix is certified **ISO 13485**
Neolix instruments are Class IIa medical devices certified by the notified body **GMED** (CE 0459).

NEOLIX

Headquarters and manufacturing plant:
NEOLIX SAS - 11, avenue Raoul Vadepiet
FR-53600 Châtres-la-Forêt (France)
☎ +33 2 5374 5007 - 📠 +33 2 5368 2005
✉ neolix@neolix.eu - 🌐 www.neolix.eu



communication
December 2018 - Rev.e